

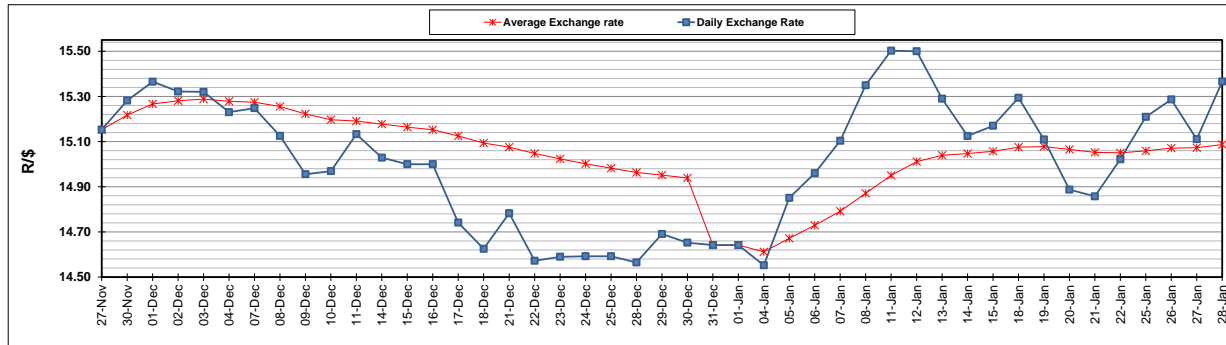
	PETROL 95 ULP	PETROL 93 ULP & LRP	DIESEL 0.05%	DIESEL 0.005%	ILL. PAR.
GAUTENG PUMP PRICE (SA c/l) AS FROM 06/01/2021	1,486.000	1,469.000	-	-	-
WHOLESALE PRICE (SA c/l) AS FROM 06/01/2021	-	-	1,300.420	1,301.820	739.688
SINGLE NATIONAL MAXIMUM RETAIL PRICE	-	-	-	-	930.000
BASIC FUEL PRICE - 28/01/2021 (SA c/l)	613.184	605.502	604.066	608.016	587.270
PRESS RELEASE CONTRIBUTION TO BFP 06/01/2021 - 28/01/2021 (SA c/l)	519.170	512.170	541.630	543.030	527.128
UNIT OVER/(UNDER) RECOVERY - 28/01/2021 (SA c/l)	(94.014)	(93.332)	(62.436)	(64.986)	(60.142)
AVERAGE BASIC FUEL PRICE 31/12/2020 - 28/01/2021	593.437	586.392	589.447	591.766	576.207
AVERAGE UNIT OVER/(UNDER) RECOVERY 31/12/2020 - 28/01/2021	(81.886)	(82.412)	(58.293)	(59.022)	(59.555)

ANALYSIS MOVEMENT OF AVERAGE OVER/(UNDER) RECOVERY

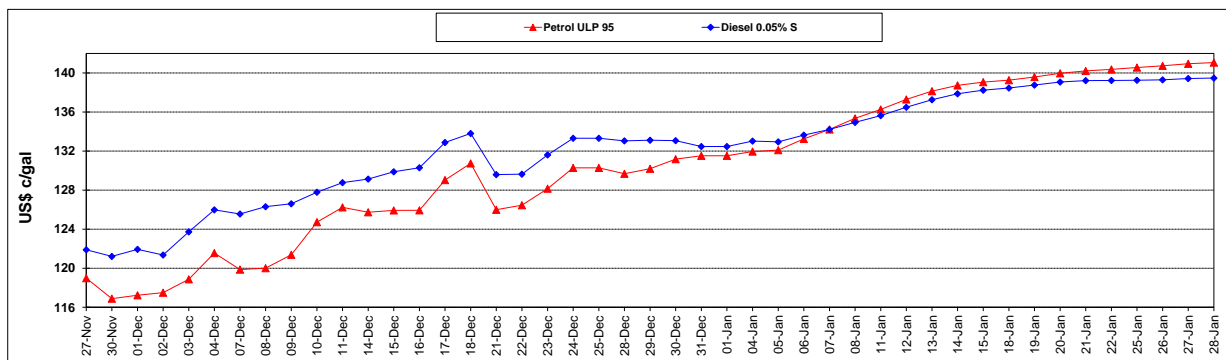
	PETROL 95	PETROL 93	DIESEL 0.05%	DIESEL 0.005%	ILL. PAR.
- MOVEMENT IN INTERNATIONAL PRODUCT PRICES	(76.061)	(76.656)	(52.507)	(53.213)	(53.899)
- MOVEMENT IN EXCHANGE RATE	(5.825)	(5.756)	(5.786)	(5.809)	(5.656)
AVERAGE UNIT OVER/(UNDER) RECOVERY 31/12/2020 - 28/01/2021	(81.886)	(82.412)	(58.293)	(59.022)	(59.555)

R/\$ EXCHANGE RATE - (R/\$15.3660 - 28/01/2021)

EXCHANGE RATE USED IN BASIC FUEL PRICE



INTERNATIONAL PRODUCT PRICES OF BASKET USED IN BASIC FUEL PRICE



BASIC FUEL PRICE IN SA CENTS PER LITRE

